

SOLID GROUND'S 2016 EMPLOYEE AWARDS

SOCIAL JUSTICE AWARD

Roshni Sampath, Poverty Action Community Relations & Development Manager

Roshni is an amazing leader who has used her skills to push Solid Ground toward fulfilling our social justice mission with our staff as well as our community. She graciously stepped up to facilitate communication between staff and leadership around issues of transparency and accountability. She also does an excellent job framing issues and identifying patterns, as well as keeping us all focused on creating solutions for the future, not just discussing things that have already happened.

Nominees: Rolando Avila, Christina Shimizu, Sintayehu Tollosa, Kari Ware, Advocacy Functional Leadership Team, Solid Ground Transportation Drivers



COMPASSION AWARDS



Katie Showalter, JourneyHome Case Manager

Katie has always been a voice of the people we serve in any capacity, from walkins to headquarters, to her clients, to situations in other programs. She also tries hard to see the point of view of all her clients, and she not only acknowledges their situations but helps them to see the way forward. She doesn't let people off the hook, but does it

in a way that leaves them feeling valued and validated. She has also been a go-to person for questions about trauma-informed care, and she has always stepped up to be a constructive team player when needed.

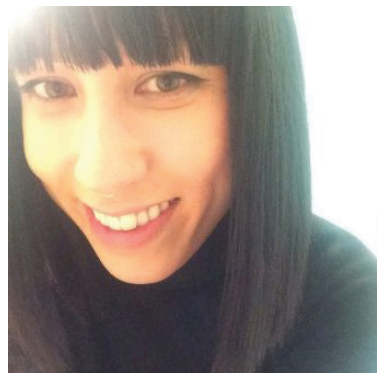
Kayla Blau, Broadview Children's Advocate

Kayla is the definition of compassion. Both moms and children alike respond to her, and she has been able to gain the trust of Broadview residents. She is an authentic person, and residents feel that. Kayla listens to people's stories, is never judgmental, and goes above and beyond. Kayla worked with youth at Broadview to create their first-ever poetry chapbook. She facilitated writing sessions with the young people to help them process and work through the trauma of homelessness and domestic violence by expressing their truths and voices via powerful poetry. Her kindness and compassion are unlimited.

Nominees: Angela Bertrand, Abdali Escatell, Colleen Goodwin, Jill Granberg, Cecile Henault, Maureen Jones, Judy Poston, Reagen Price, Christina Shimizu, Carolyn Taggart, Sintayehu Tollosa, Kari Ware, Office Support (Vanessa Cobbs & Erika Rountree), Prevention Case Managers (Barbara Hart & Celestine Berrysmith), Supportive Services Team



COLLABORATION AWARD



Christina Shimizu, Major Gifts Officer

Christina is a team player who always looks for ways to collaborate with others. One example of this was her work with Hunger & Food Resources and Volunteer Services to build a Food Justice event that recognized both our volunteers and our monthly donors. She also partners with people across the Resource Development team to

build stronger projects and works with other departments to tell our program participants' stories in a way that is empowering and respectful.

Nominees: Trish Abbate, Linda Bartolini, Nicole Basta, Bellen Drake, Dee Hillis, Kimmy Jones, Maureen Jones, Kathleen Penna, Judy Poston, David Reyes, Ryan Rodriguez, Roshni Sampath, Sintayehu Tollosa, Kari Ware, SGT Technicians

ACCOUNTABILITY AWARD

Benefits Legal Assistance (BLA) Team: Danielle Caldwell, Sara Robbins & Katie Scott



BLA is a small team, but they make a huge impact. Through active listening, compassion and meticulous attention to the details, they hold the public benefits systems accountable and empower individuals to seek the assistance they deserve.

Nominees: Bellen Drake, Karen Ford, Sintayehu Tollosa, Kari Ware, Housing Stabilization Admin & Contracts Team, Human Resources Team, Office Support Team, Prevention Case Managers (Barbara Hart & Celestine Berrysmith)

RESPECT AWARD

Abdel Elfahmy, Solid Ground Transportation (SGT) Supervisor

Abdel is one of SGT's newest supervisors. In this role, he has demonstrated his support for drivers and his supervisory team. He assumes that everyone has good intentions and tries to understand what they really need. He is part of the solution and never contributes to the problem. He shows this in his every action every day, and his helpful, respectful approach is greatly appreciated.



Nominees: Trish Abbate, Bellen Drake, Jill Granberg, Christina Shimizu, Katie Showalter, Sintayehu Tollosa, Kari Ware, Housing Search Advocates, JourneyHome Housing Search Team, Office Support (Vanessa Cobbs & Erika Rountree), Poverty Action Team

INTEGRITY AWARD

Homelessness Prevention Case Manager Team: Barbara Hart & Celestine Berrysmith



Barb and Celestine exemplify integrity and dedication. They are sincere and dedicated in their case management, and they provide an outstanding service to their clients and their community. They operate within very strict funding sources and programs, yet their creativity and passion for their work and our mission always

shines through. Their decisions are so client focused, and their beautiful spirits, responsibility, dedication and values really elevate the Prevention Team as a whole.

Nominees: Trish Abbate, Linda Bartolini, Natasha Pfeifer, Sintayehu Tollosa, Kari Ware, Communications Department, Food & Hunger Resources Department